

1
2
3
4
5
6
7
8
9
10
11
12
13
14
15
16
17
18
19
20
21
22
23
24
25
26
27
28

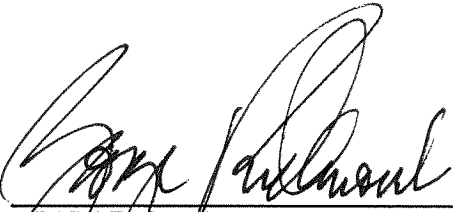
Element as described in Exhibit I attached hereto are hereby approved by the Board of Supervisors.

BE IT FURTHER RESOLVED that this action of the Board is based on the findings contained in Planning Commission Resolutions No. 91-17 and No. 91-18 which are hereby incorporated by reference.

BE IT FURTHER RESOLVED the Board of Supervisors finds it is the intent of the amendments regulating private schools that private schools shall be considered of similar intensity to churches and the use of existing church facilities and expanded church facilities as permitted in accordance with Section 17.08.020 of the County Zoning Ordinance for school activities shall not be subject to the amendments regulating private schools.


PASSED AND ADOPTED by the Mariposa County Board of Supervisors on this 5th day of November, 1991 by the following vote:

- AYES: BAGGETT, ERICKSON, RADANOVICH, TABER
- NOES: NONE
- ABSTAINED: NONE
- EXCUSED: PUNTE

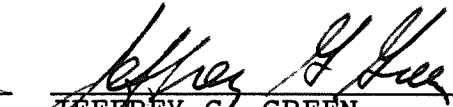


 GEORGE P. RADANOVICH, Chairman
 Mariposa County Board of
 Supervisors

ATTEST: APPROVED AS TO FORM AND LEGAL SUFFICIENCY:



 MARGIE WILLIAMS
 Clerk of the Board

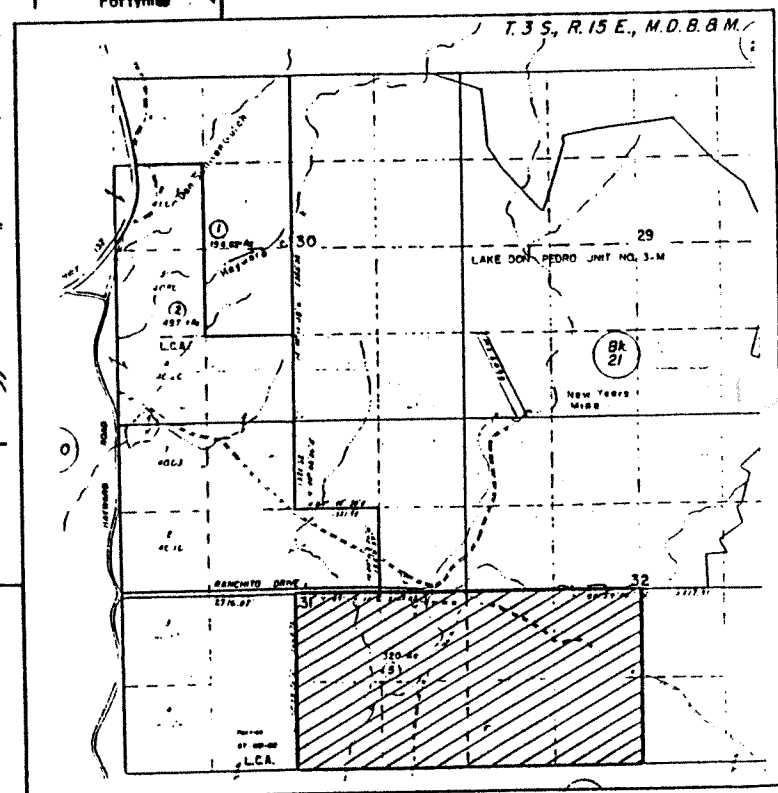
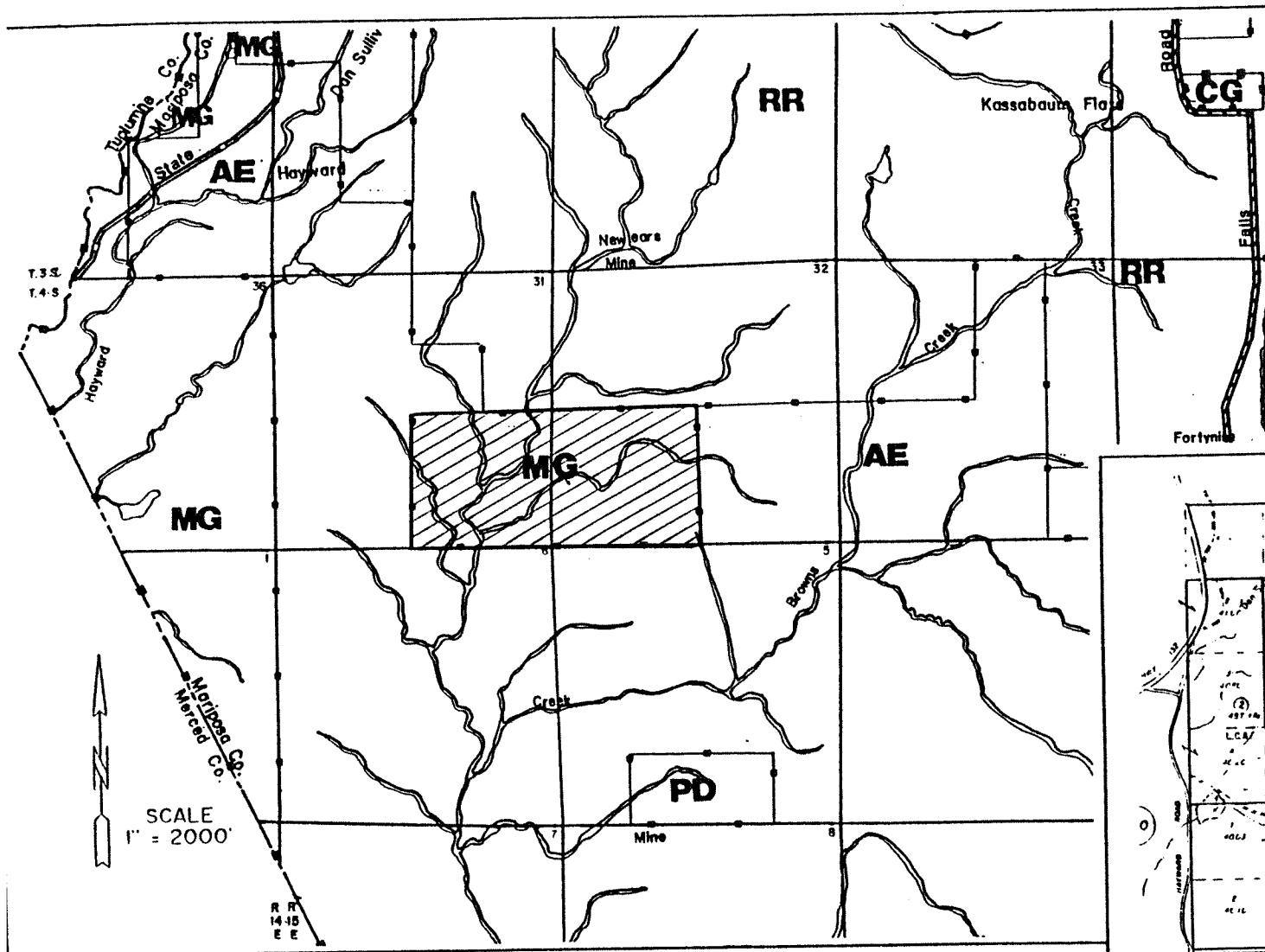


 JEFFREY G. GREEN
 County Counsel

EXHIBIT A

APN 01-260-05

FROM: MOUNTAIN GENERAL
TO: AGRICULTURAL EXCLUSIVE
LAND USE & ZONE



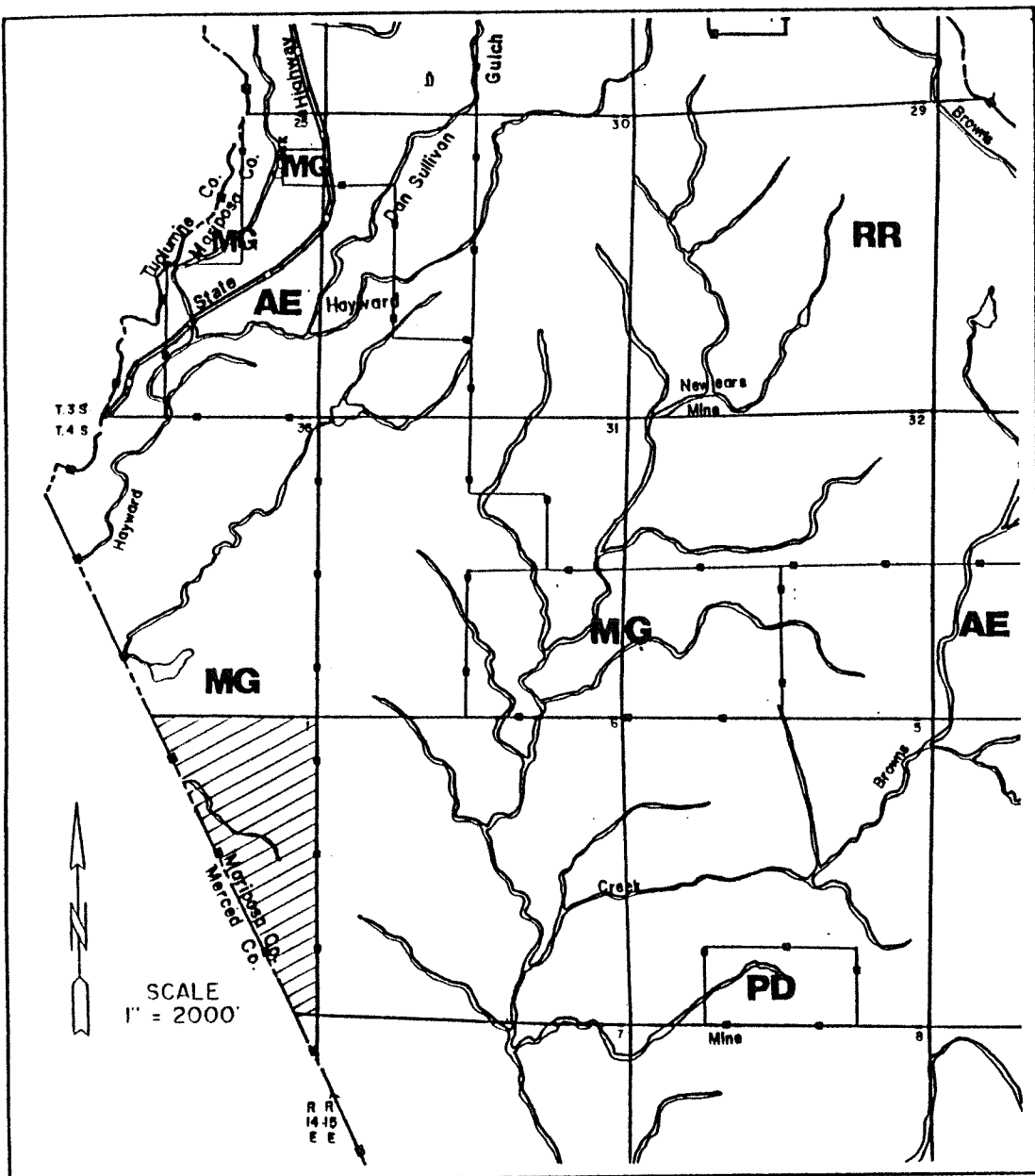
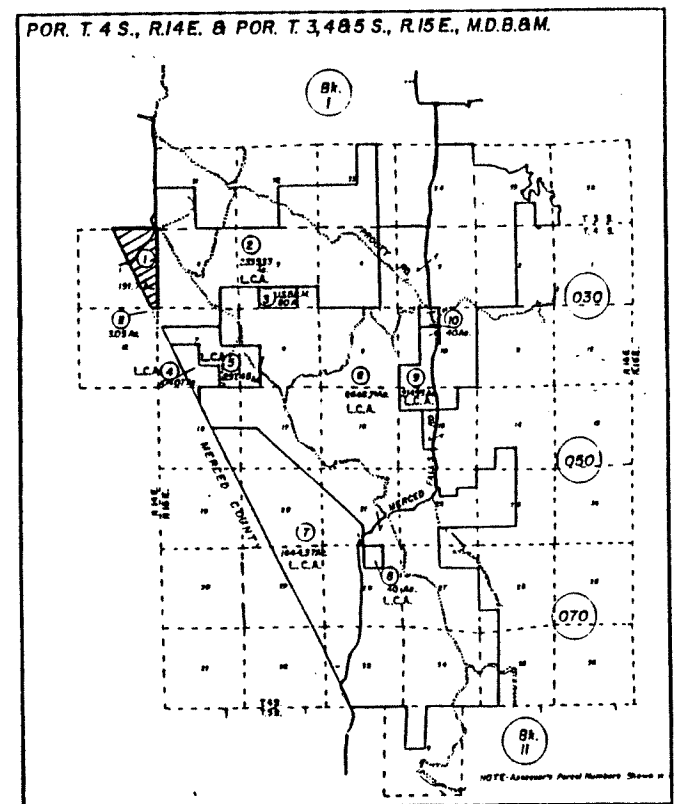


EXHIBIT C

APN 07-010-01

FROM: MOUNTAIN GENERAL
TO: AGRICULTURAL EXCLUSIVE
LAND USE & ZONE



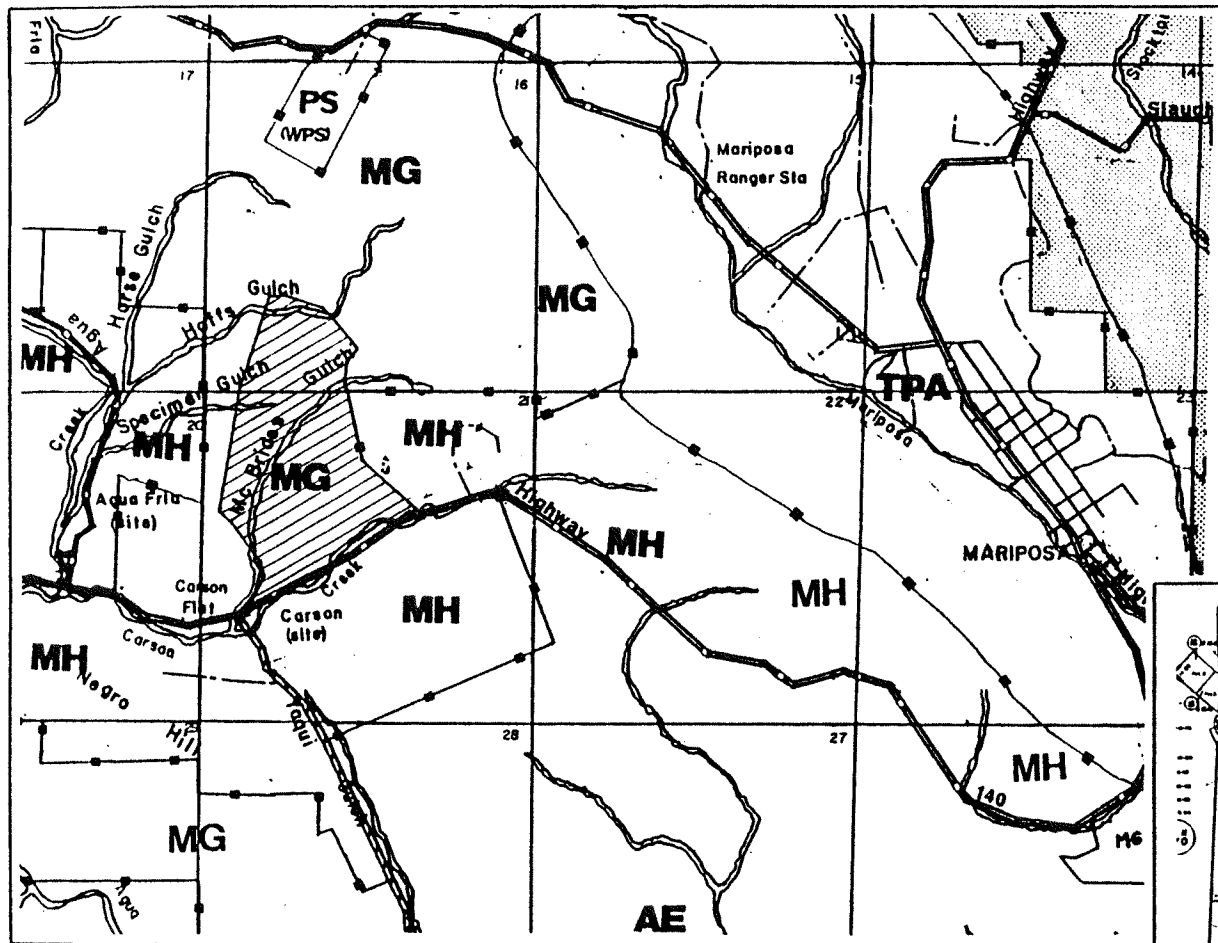


EXHIBIT E
 APN 12-120-30

FROM: MOUNTAIN GENERAL
 TO: AGRICULTURAL EXCLUSIVE
 LAND USE & ZONE

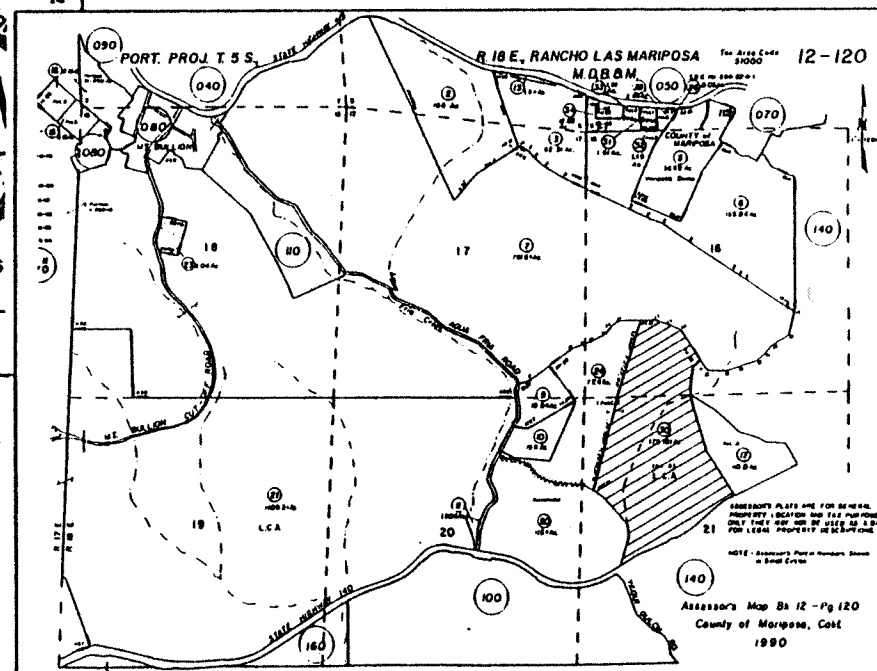


EXHIBIT F

APN's 17-230-56/57

FROM: MOUNTAIN GENERAL
TO: AGRICULTURAL EXCLUSIVE
LAND USE & ZONE

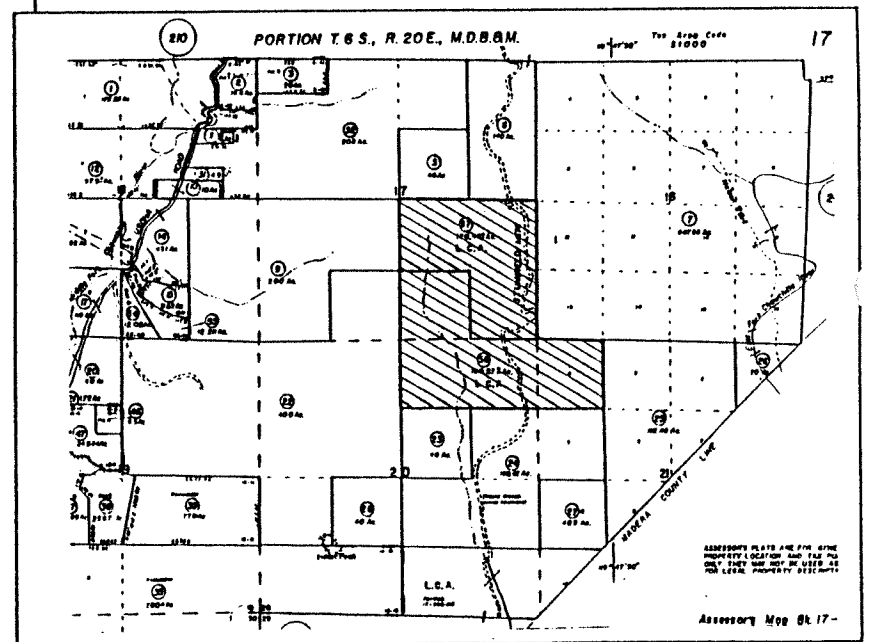
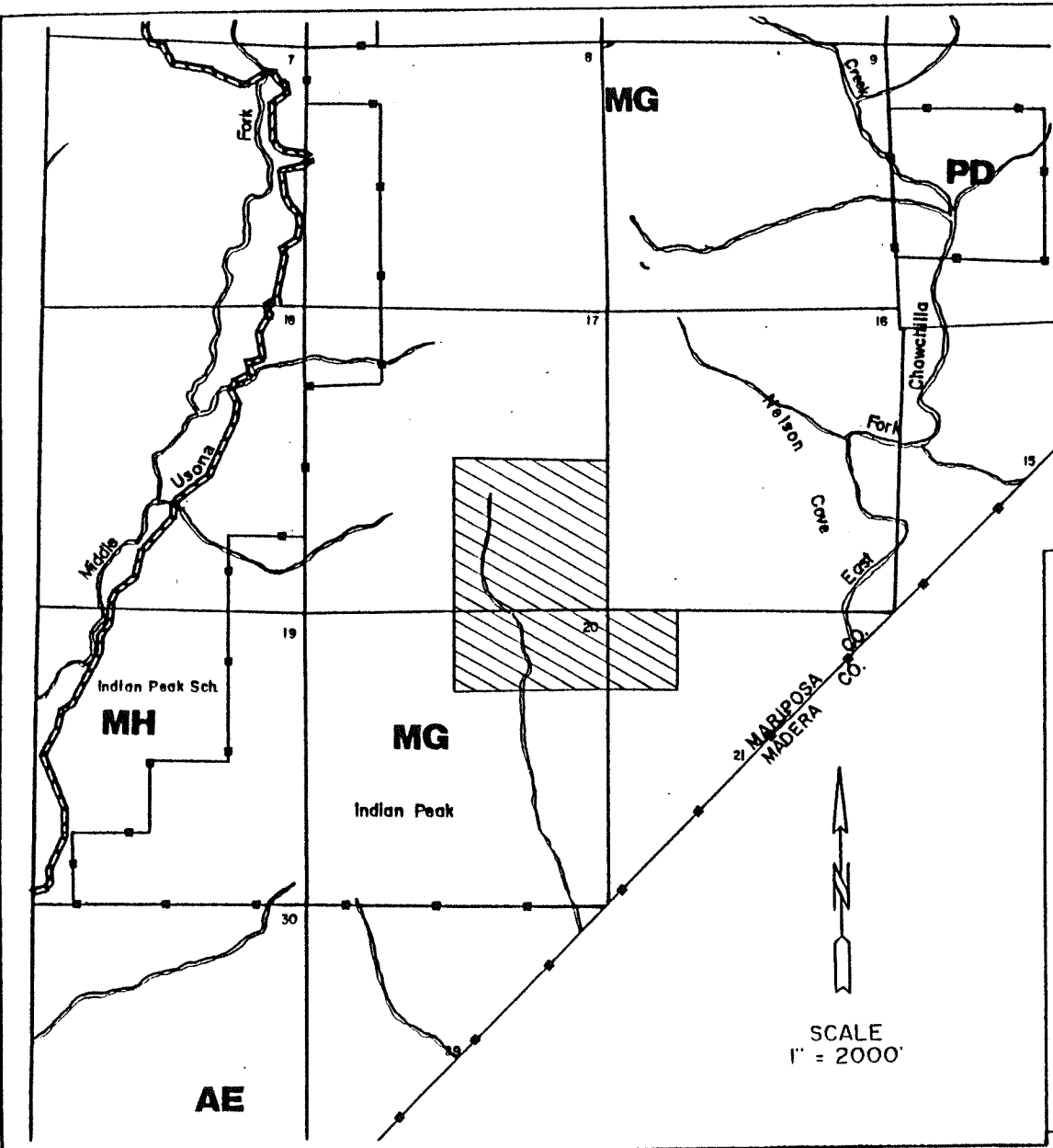


EXHIBIT G

APN 17-250-05 (portion)

FROM: MOUNTAIN GENERAL
TO: AGRICULTURAL EXCLUSIVE
LAND USE & ZONE

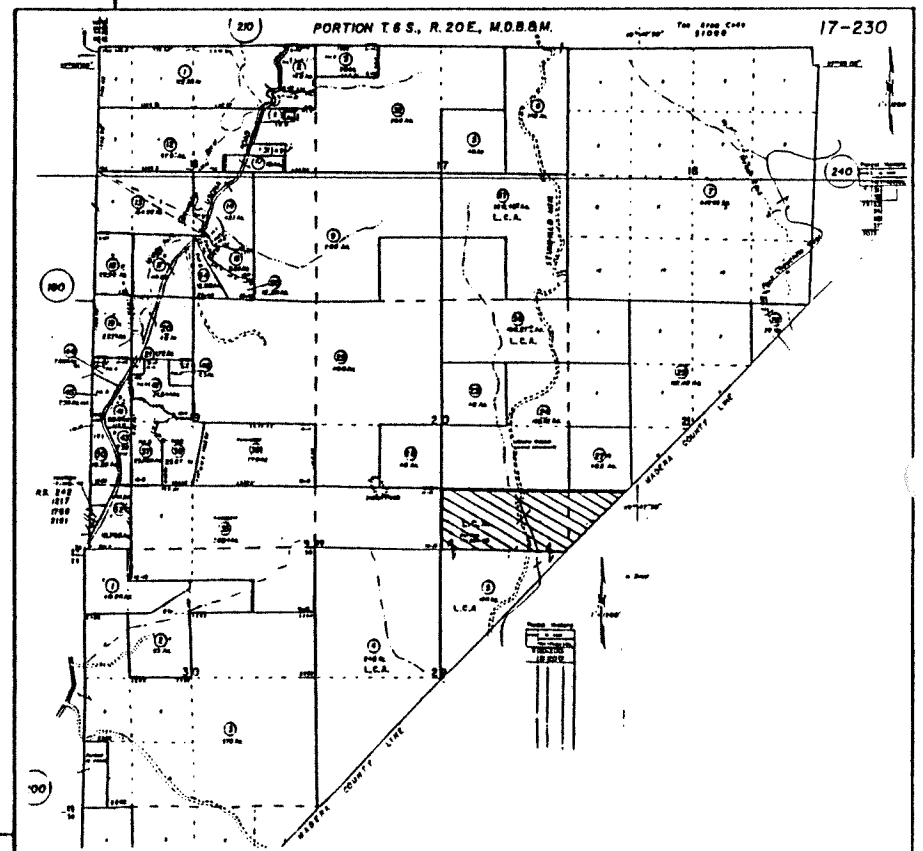
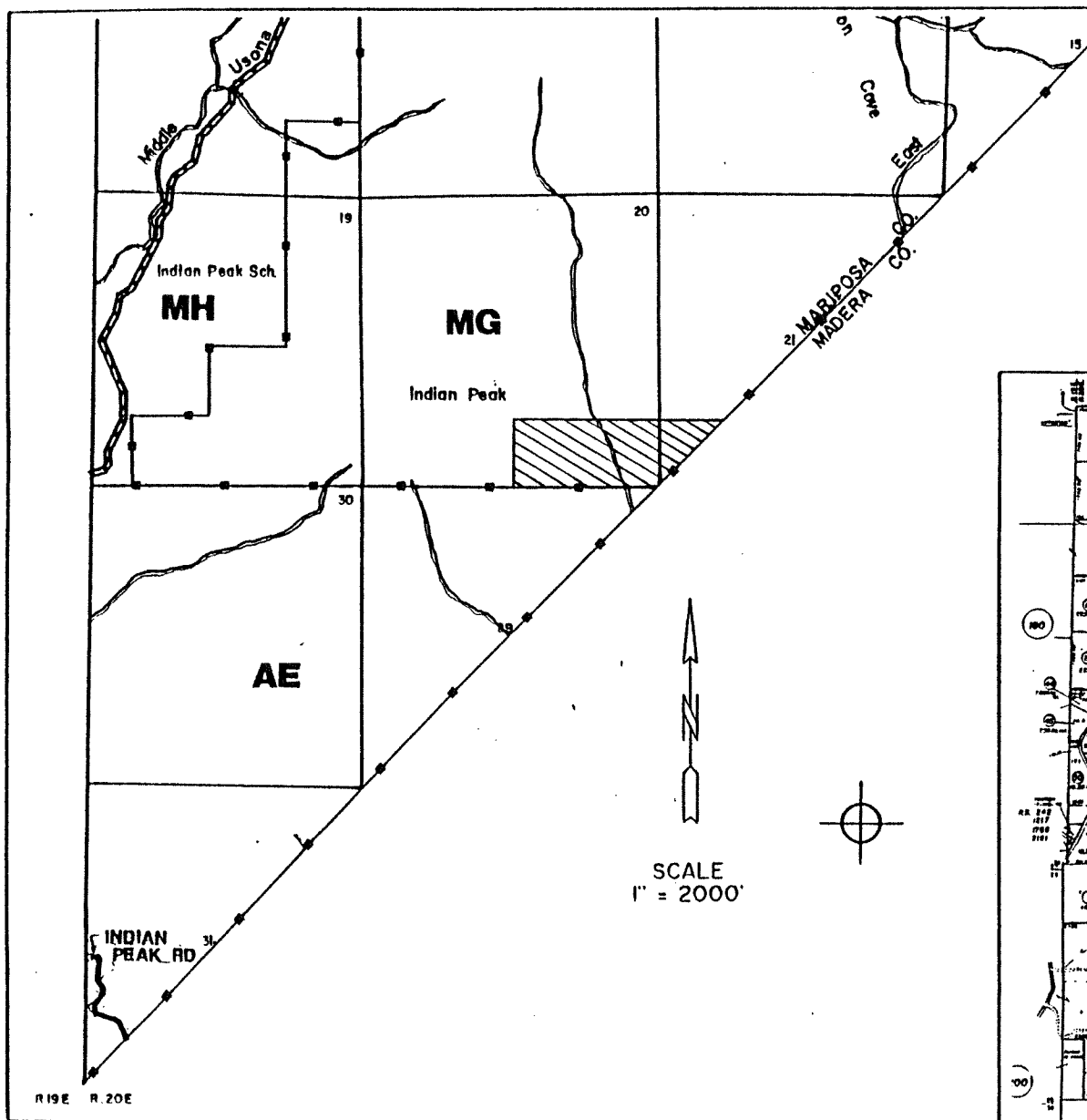
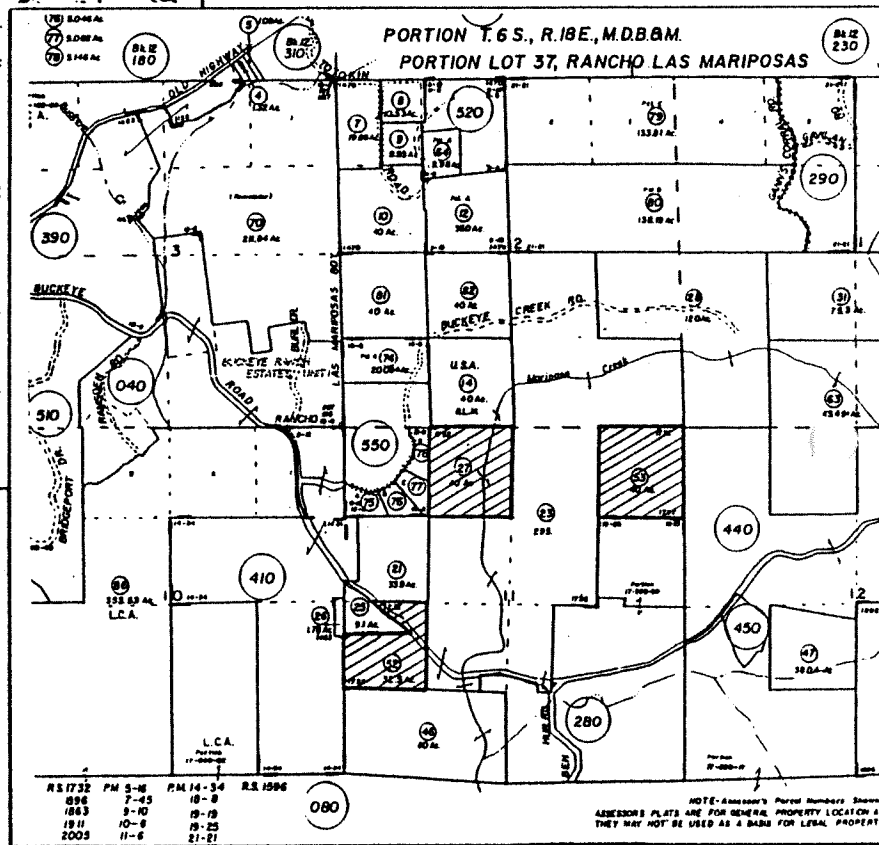
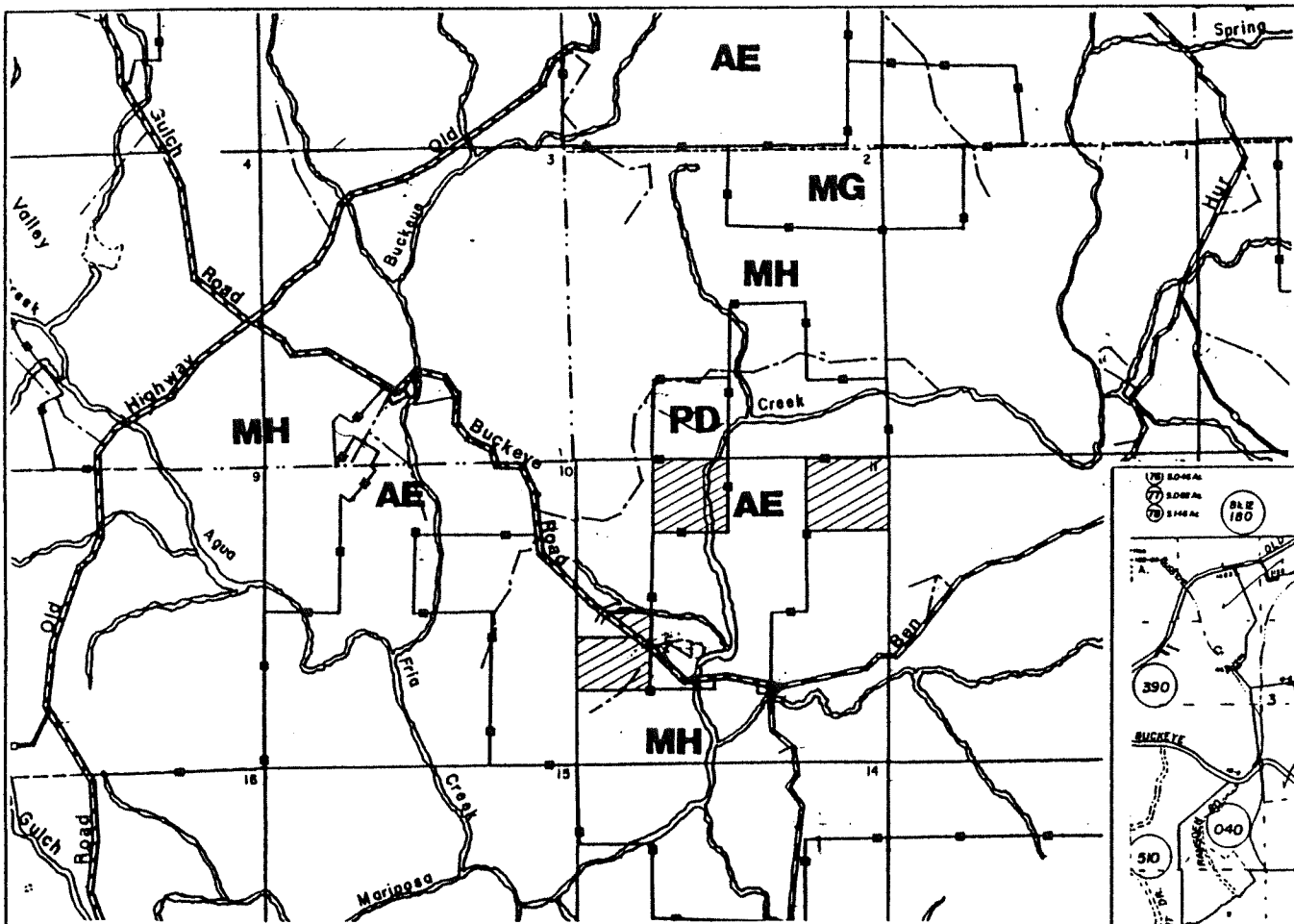


EXHIBIT H

APN's 17-030-27/52/53

FROM: MOUNTAIN HOME
TO: AGRICULTURAL EXCLUSIVE
LAND USE & ZONE



SCALE
1" = 2000'

EXHIBIT I

- 1) Replace the definition of public schools in Section 3.100 (Definition of Terms and Phrases) of the Land Use Element with the following:

School, Public: An educational institution or facility which provides education services and is operated by a public agency. Public schools shall not include boarding schools or other types of educational activities which provide residential facilities for temporary or permanent use by students.

- 2) Add the following definition to Section 3.100 of the Land Use Element:

School, Private: An educational institution or facility which provides educational services and is operated by a private individual or organization. A private school shall include all educational institutions or facilities which are not defined as a public school. Examples of a private school include, but are not limited to, nursery/preschools, parochial schools, and private elementary and secondary schools. Private schools shall not include teaching within a residential structure of family members who reside in the same residence.

- 3) Remove "private school" as a permitted use in the following land use classifications and sections of the Land Use Element:

General Forest land use--Section 3.505(B)(1)(a)
Mountain Preserve land use--Section 3.506(B)(1)(a)

- 4) Add the following to Section 3.603(E) of the Land Use Element as a general use:

9. Private schools for 12 or fewer students and conducted in a residential structure shall be a permitted use in the RR, MH, MT, MG, GF, MP, and AE land use classifications.

- 5) Add "private schools except as permitted by Section 3.603(E)(9)" as a conditional use to the following land use classifications and sections of the Land Use Element:

Rural Residential land use--Section 3.501(B)(1)(b)
Mountain Transition land use--Section 3.502(B)(1)(b)
Mountain Home land use--Section 3.503(B)(1)(b)
Mountain General land use--Section 3.504(B)(1)(b)
General Forest land use--Section 3.505(B)(1)(b)
Mountain Preserve land use--Section 3.506(B)(1)(b)
Agriculture Exclusive land use--Section 3.507(B)(1)(b)