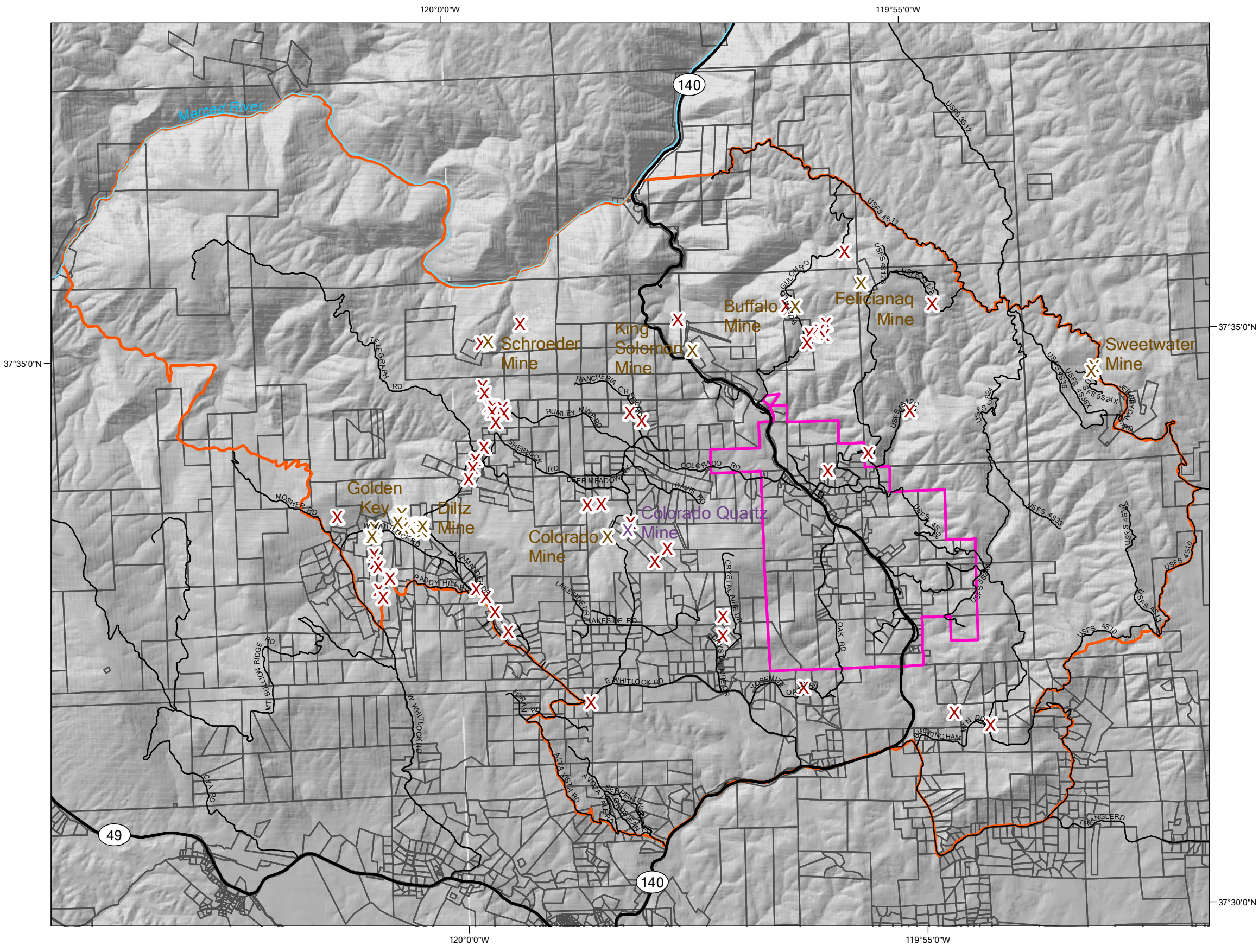


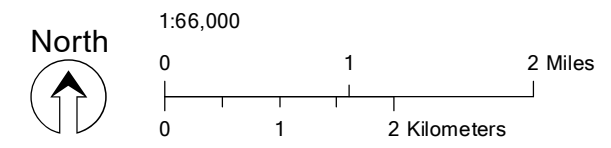
Historic and Current Mines within the Midpines Area

Mariposa County Planning Department
 P.O. Box 2039
 5100 Bullion Street
 Mariposa, California 95338
 (209) 966-5151
 Fax (209) 742-5024
<http://www.mariposacounty.org/planning>



- 2005 Proposed Midpines Community Planning Area (General Plan)
- 2009 Proposed Boundary (Midpines Planning Advisory Committee)
- Assessor Parcel Map
- X Active Mine
- X USGS Topographic Map Named Mines
- X USGS Topographic Map Unnamed Mines

- Area Roads
- State Highways
- Merced River



Map Date: April 16, 2013
 Coordinate System: NAD 1983 StatePlane California III
 Map Credit: EE Meriam - Mariposa County Planning Department
 Data Source: Mariposa County Planning Department GIS; Assessor Parcel Map March 2013 Update; US Geological Survey Topographic Map Data
 Mariposa County makes no warranty regarding the accuracy of the GIS or the analysis and the conclusions resulting from using our GIS data.

