

MARIPOSA COUNTY ORDINANCE NO. 815

(Not to be Codified)

AN ORDINANCE AMENDING THE MARIPOSA COUNTY ZONING MAP

WHEREAS, the Mariposa County Board of Supervisors has initiated action to amend the Mariposa County Zoning Map; and

WHEREAS, the Mariposa County Planning Commission and Board of Supervisors have held duly noticed public hearings on the amendments in accordance with State Law and County Code; and

WHEREAS, the Mariposa County Planning Commission has recommended approval of the amendments; and

WHEREAS, the Board of Supervisors has determined, based on recommendations by the Planning Director and Planning Commission, that the amendments have no potential to create significant environmental effects and a Notice of Exemption has been filed in accordance with the California Environmental Quality Act and the Mariposa County Environmental Review Policies and Procedures adopted pursuant thereto; and

WHEREAS, the amendments to the Zoning Map are consistent with the Mariposa County General Plan.

NOW THEREFORE the Mariposa County Board of Supervisors does hereby ordain as follows:

SECTION I

The properties described in Exhibits A, B, C, E, F, G, and H attached hereto are hereby zoned Agriculture Exclusive (AE) as provided by Section 17.04.030 of Mariposa County Code.

SECTION II

The properties described in Exhibit D attached hereto are hereby zoned Mountain Preserve (MP) as provided by Section 17.04.030 of Mariposa County Code.

SECTION III

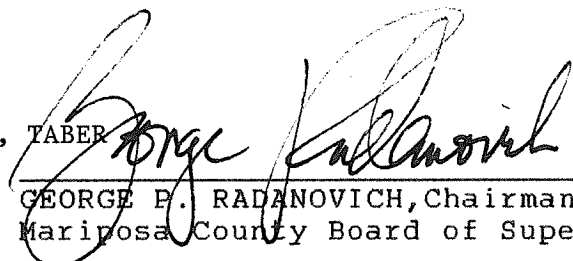
The Official Zoning Map of Mariposa County shall be modified to reflect that the properties described in the exhibits attached hereto are located in the zone districts as specified in Sections I and II.

SECTION IV


This ordinance shall become effective thirty (30) days after final passage pursuant to Government Code Section 25123.

PASSED AND ADOPTED by the Mariposa County Board of Supervisors on this 12th day of November , 1991 by the following vote:

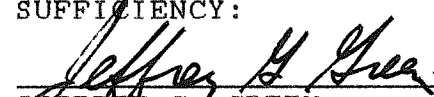
AYES:	BAGGETT, ERICKSON, RADANOVICH
NOES:	NONE
ABSTAINED:	NONE
EXCUSED:	PUNTE, TABER



 GEORGE P. RADANOVICH, Chairman
 Mariposa County Board of Supervisors

ATTEST:


 MARGIE WILLIAMS
 Clerk of the Board

APPROVED AS TO FORM AND LEGAL SUFFICIENCY:


 JEFFREY G. GREEN
 County Counsel

1
2
3
4
5
6
7
8
9
10
11
12
13
14
15
16
17
18
19
20
21
22
23
24
25
26
27
28

EXHIBIT A

APN 01-260-05

FROM: MOUNTAIN GENERAL
TO: AGRICULTURAL EXCLUSIVE
LAND USE & ZONE

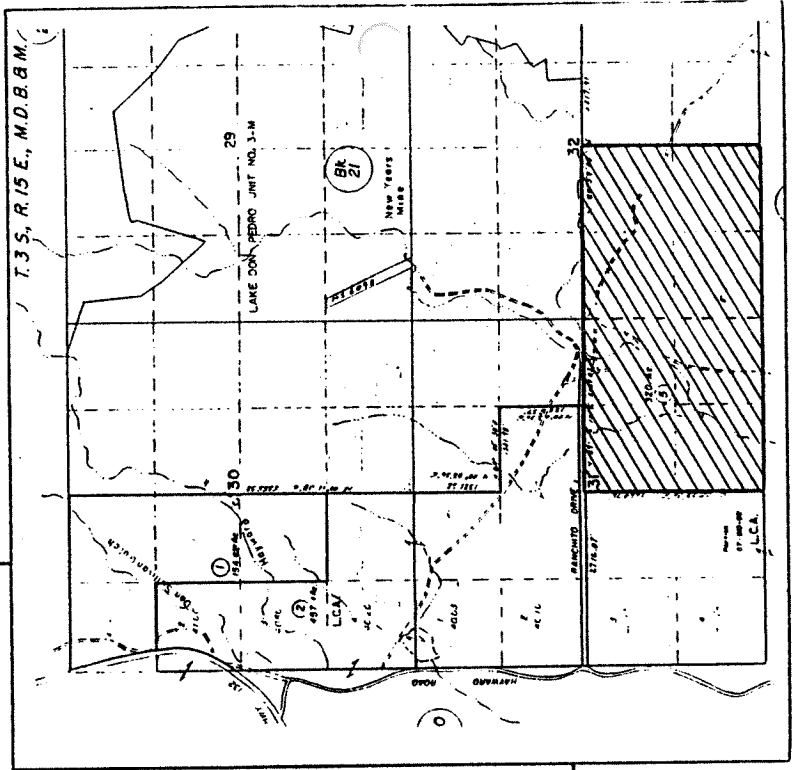
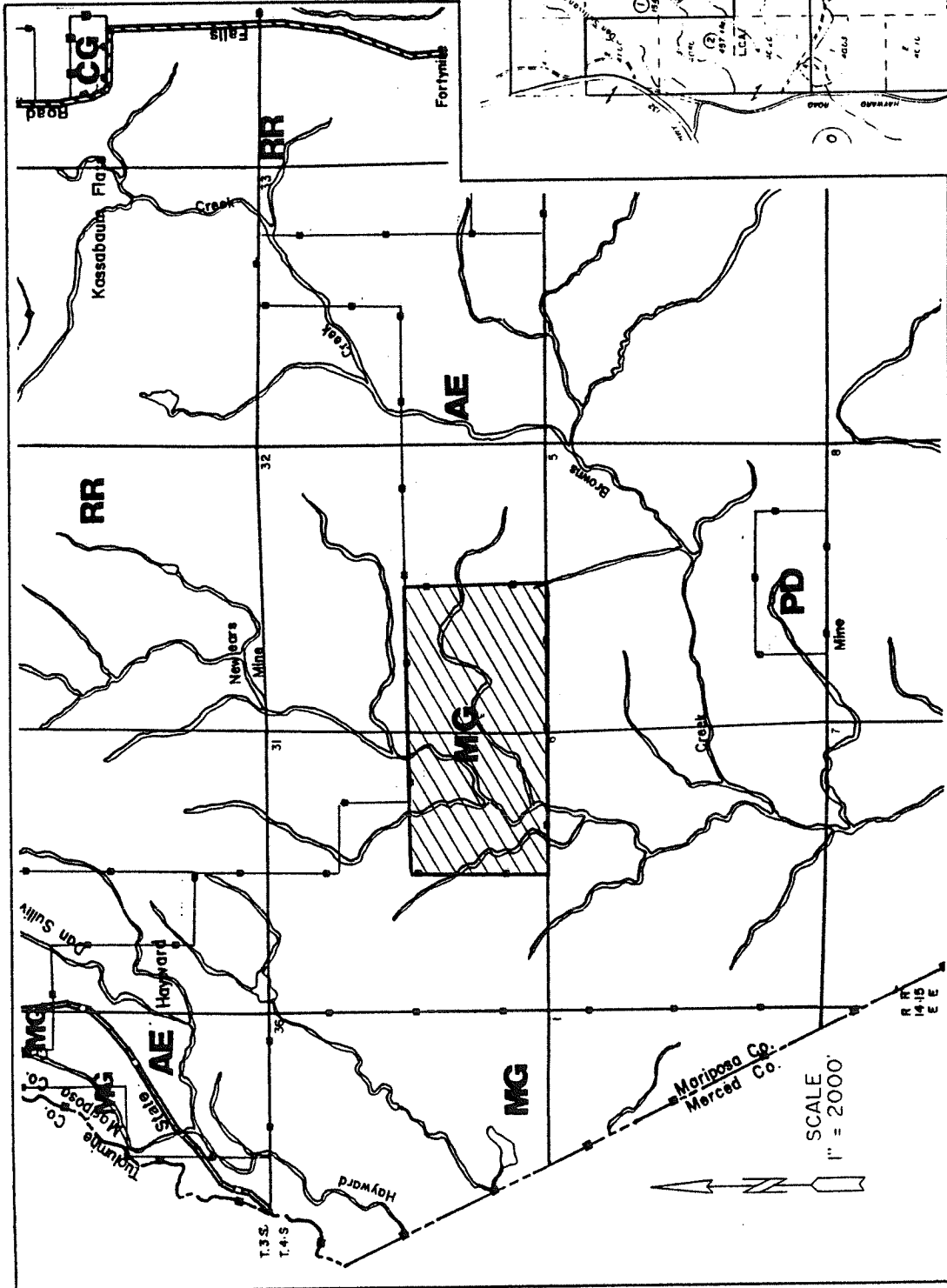
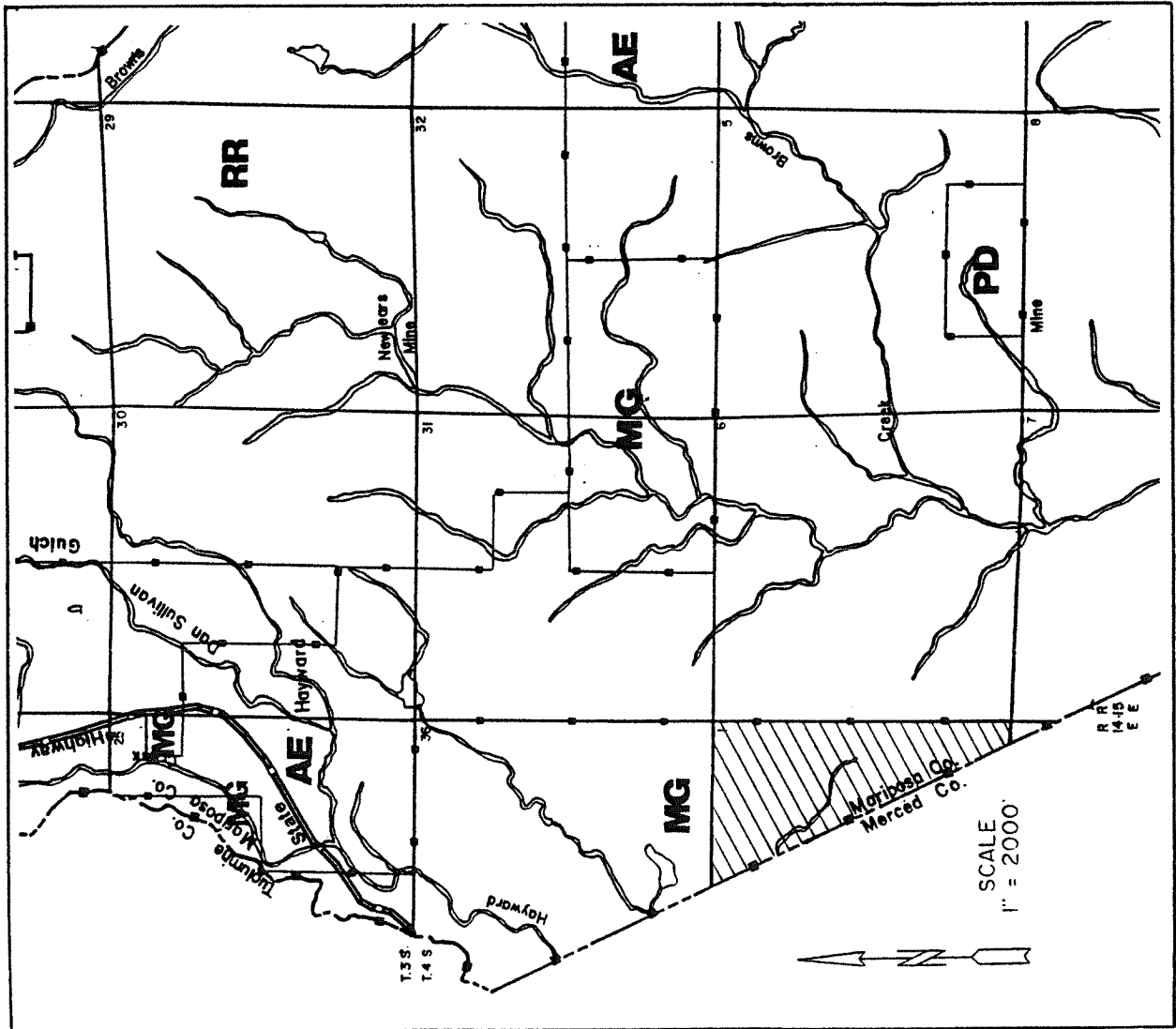


EXHIBIT C

APN 07-010-01

FROM: MOUNTAIN GENERAL
TO: AGRICULTURAL EXCLUSIVE
LAND USE & ZONE



POR. T. 4 S., R. 14 E. & POR. T. 3, 4 & 5 S., R. 15 E., M.D.B.M.

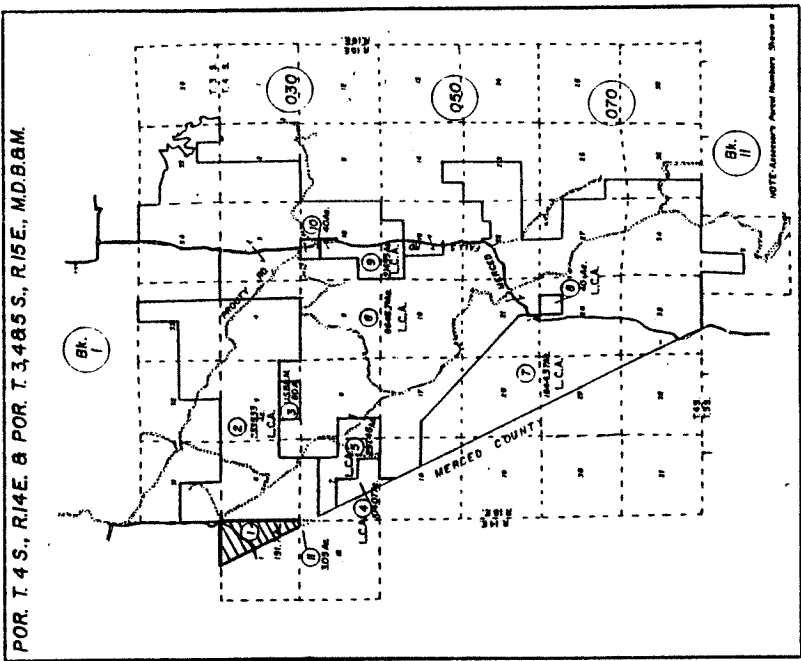
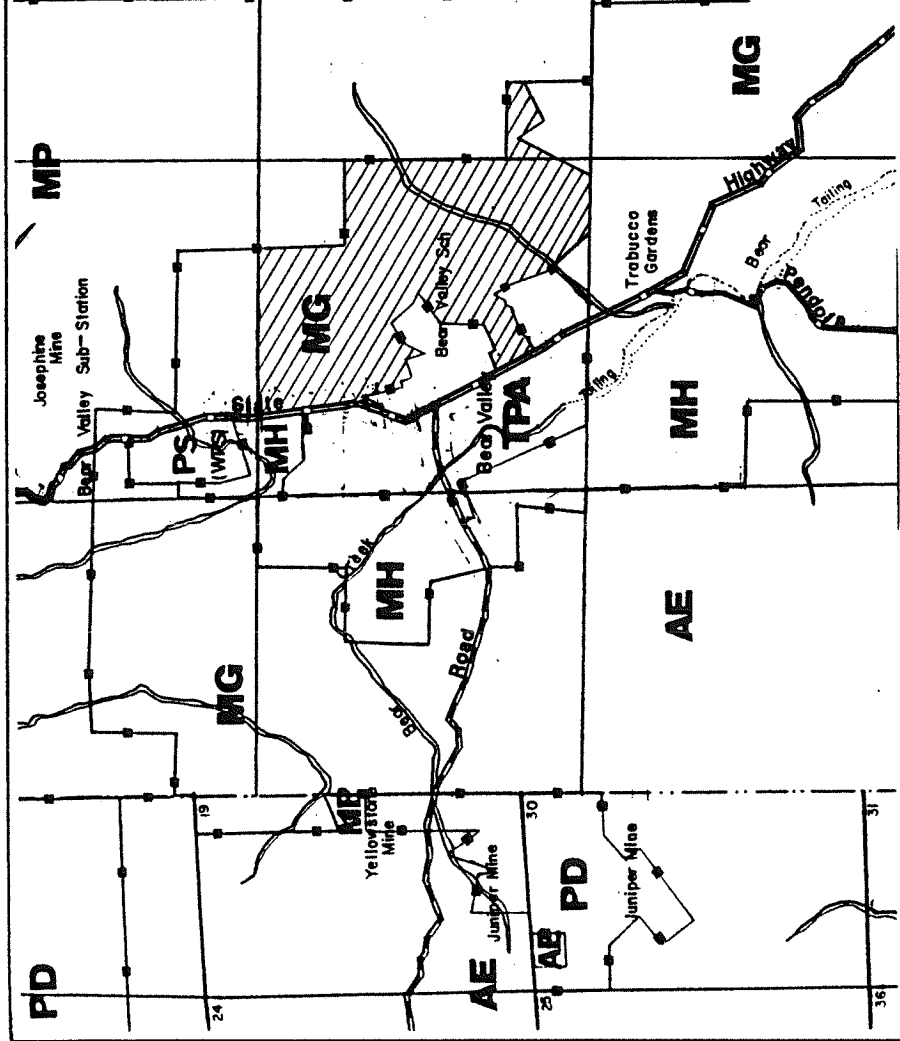
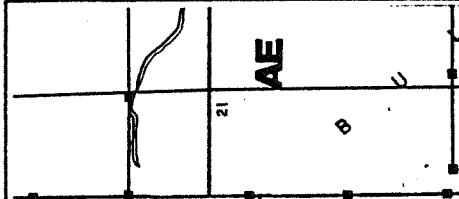


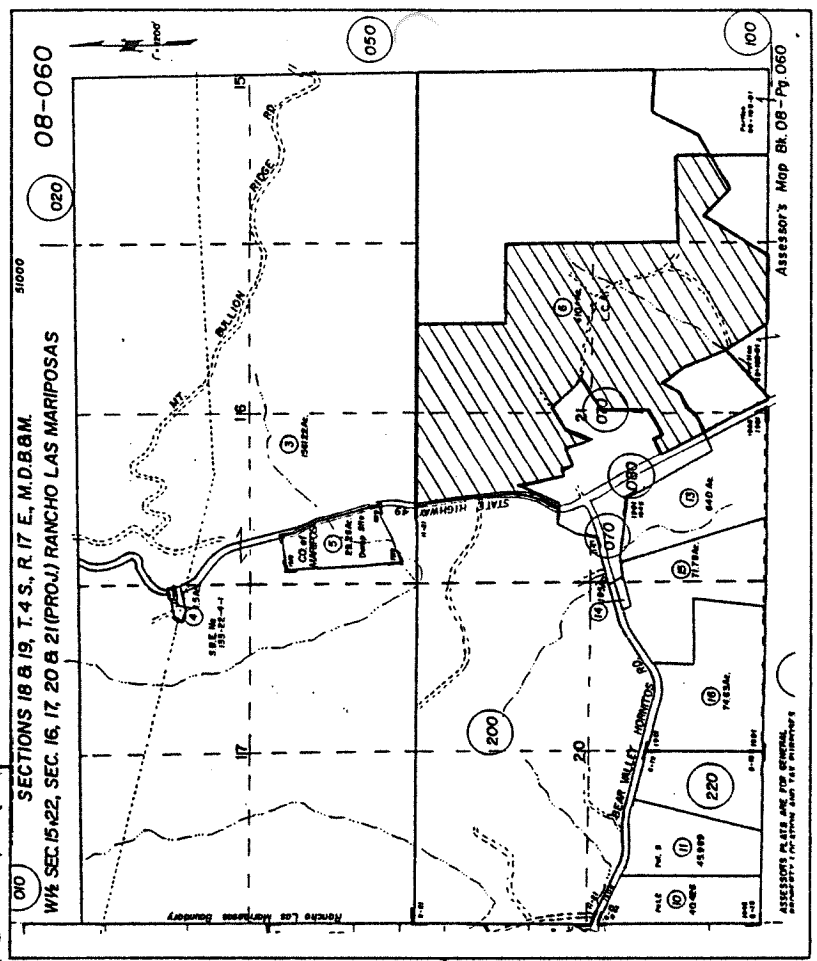
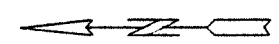
EXHIBIT D

APN 08-060-06

FROM: MOUNTAIN GENERAL
TO: MOUNTAIN PRESERVE
LAND USE 8 ZONE



SCALE
1" = 2000'



SECTIONS 18 & 19, T.4 S., R.17 E., M.D.B.M.
W/4 SEC. 15, 22, SEC. 16, 17, 20 & 21 (PROJ.) RANCHO LAS MARIPOSAS

ASSASSOR'S PLATS ARE FOR GENERAL INFORMATION ONLY. FOR STATE AND TAX PURPOSES REFER TO THE ASSASSOR'S MAP BK. 08 - Pg. 060

EXHIBIT E

APN 12-120-30

FROM: MOUNTAIN GENERAL
TO: AGRICULTURAL EXCLUSIVE
LAND USE 8 ZONE

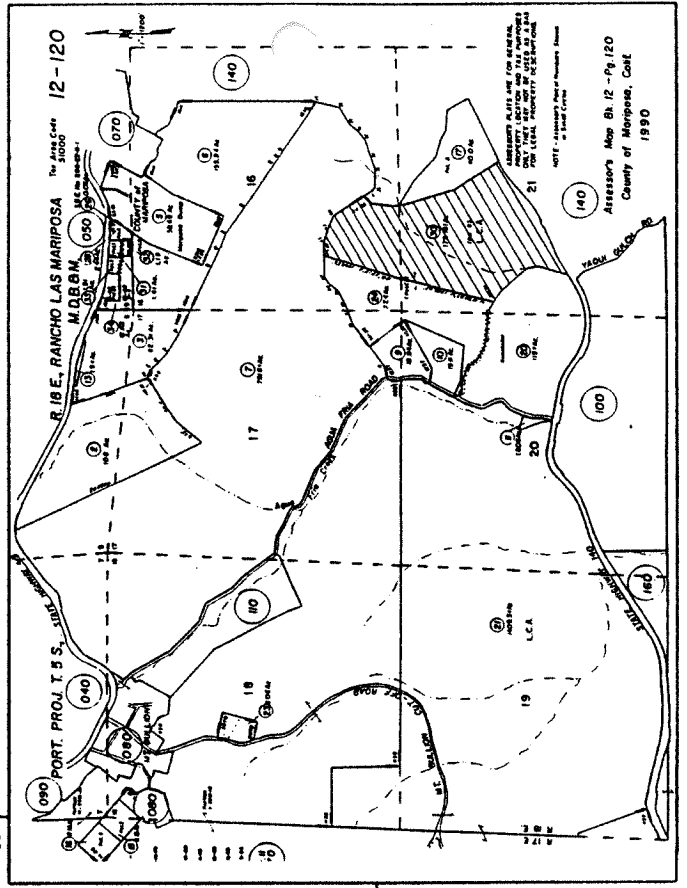
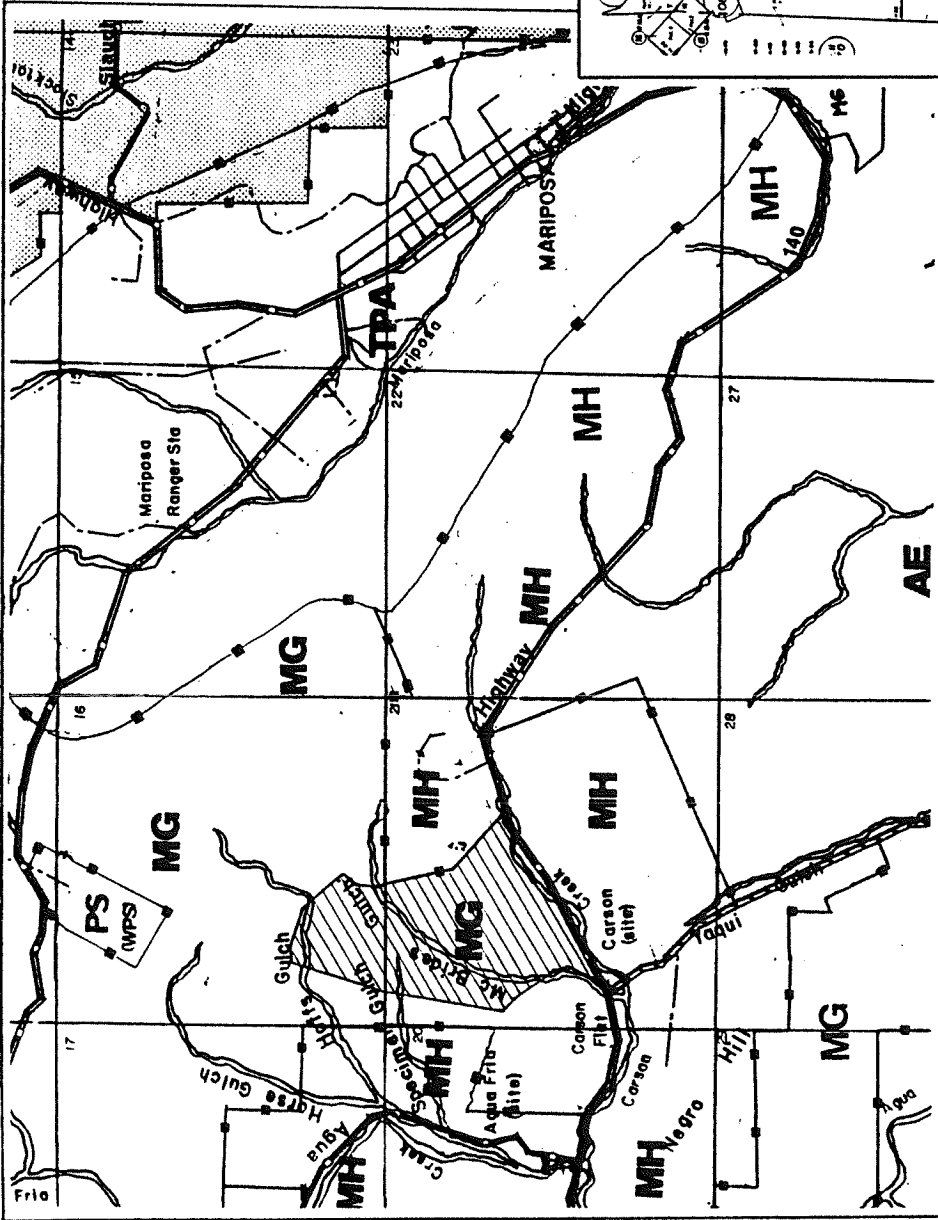


EXHIBIT F

APN's 17-230-56/57

FROM: MOUNTAIN GENERAL
TO: AGRICULTURAL EXCLUSIVE
LAND USE & ZONE

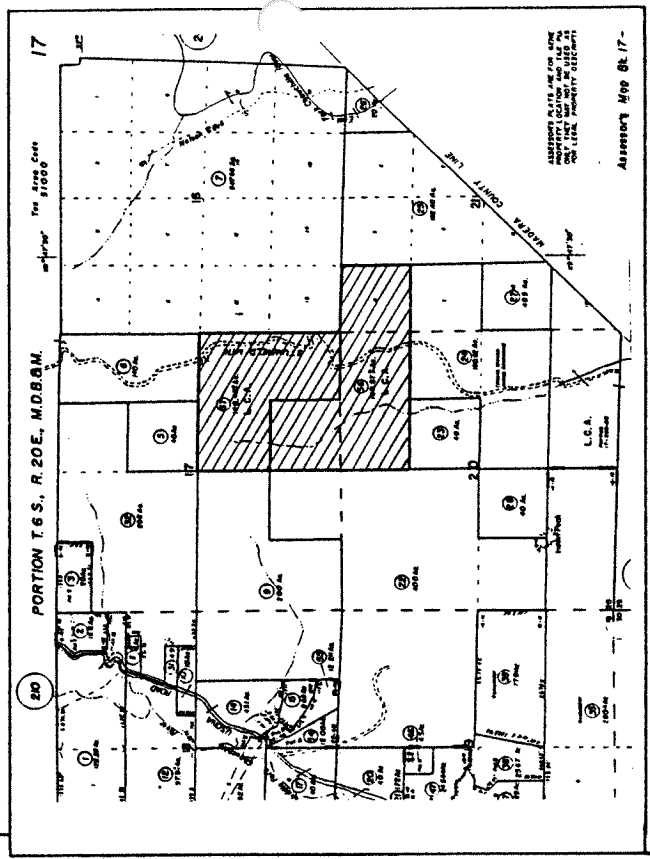
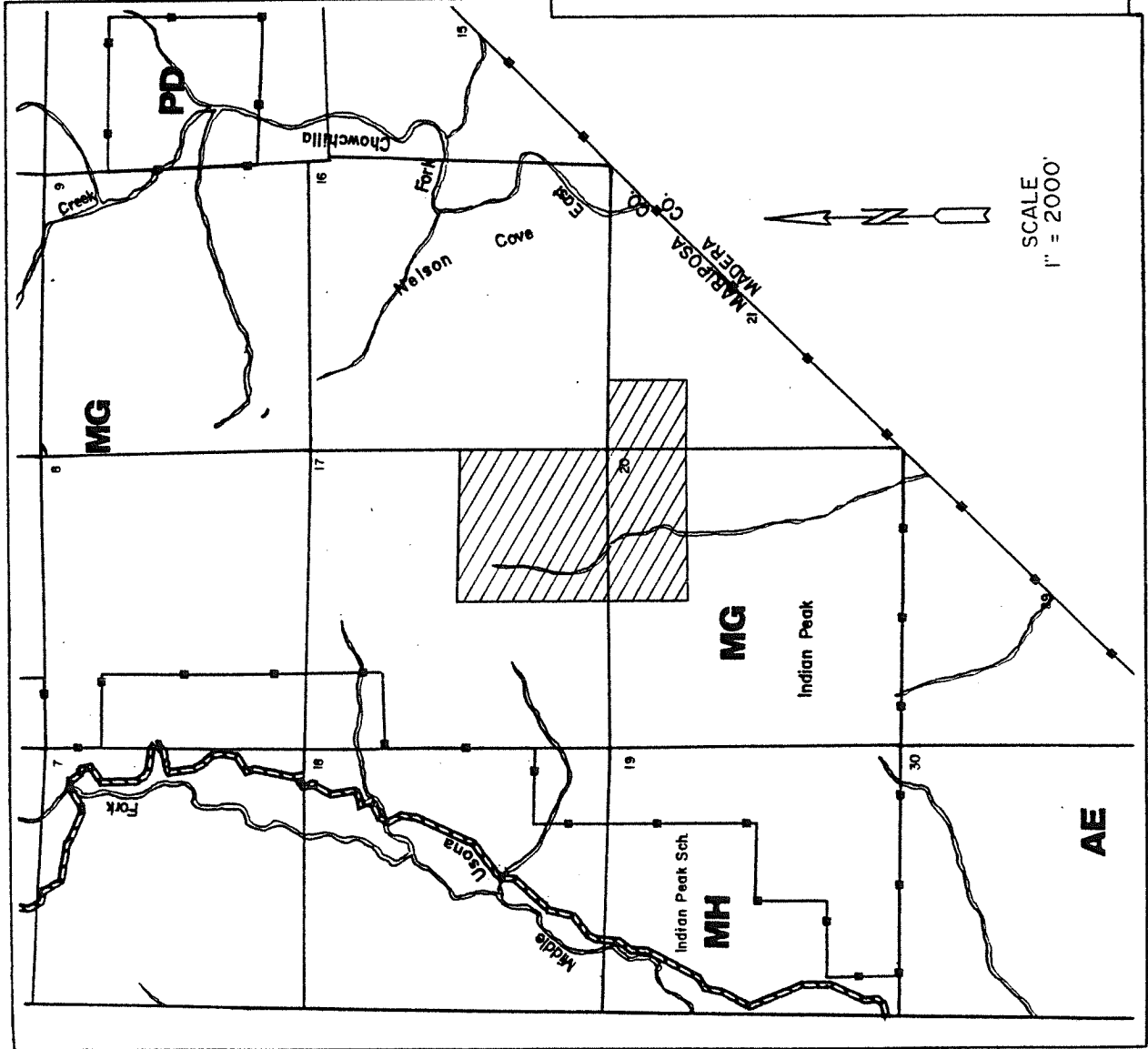


EXHIBIT G

APN 17-250-05 (portion)

FROM: MOUNTAIN GENERAL
TO: AGRICULTURAL EXCLUSIVE
LAND USE & ZONE

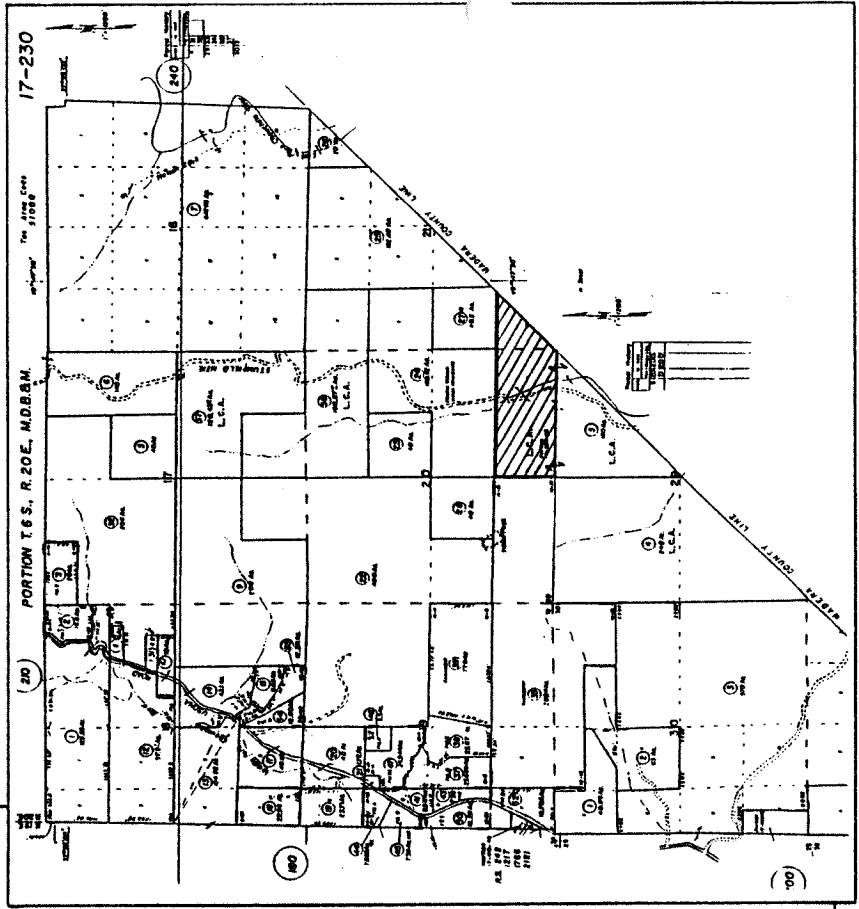
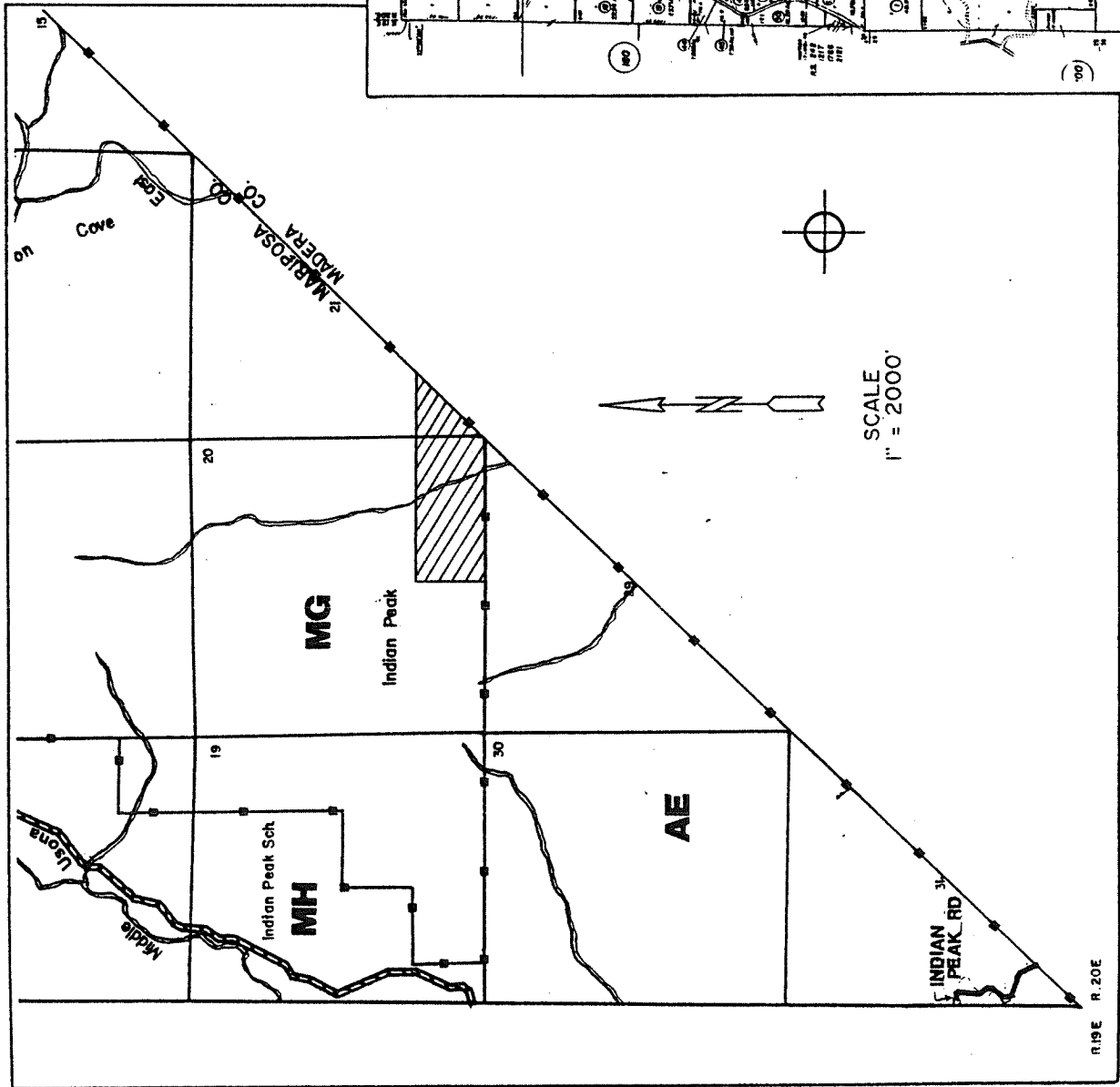
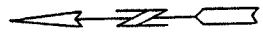
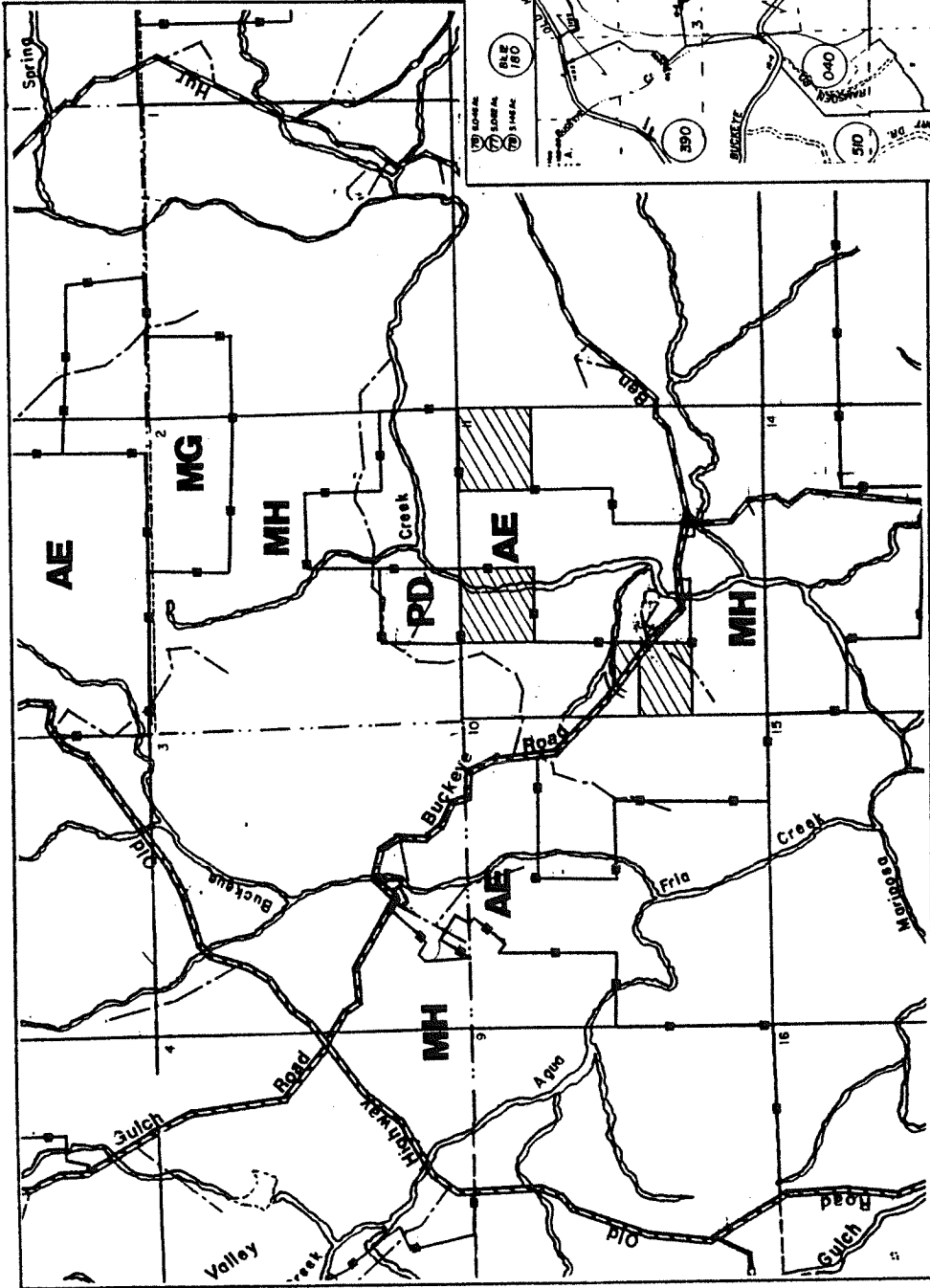


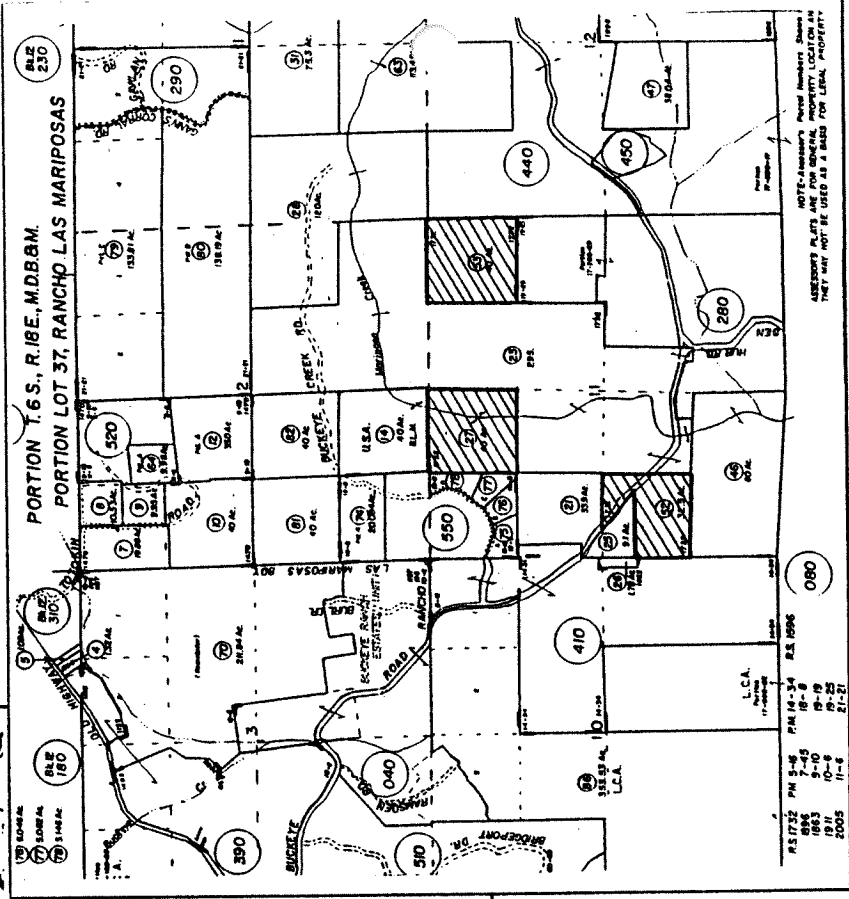
EXHIBIT H

APN's 17-030-27/52/53

FROM: MOUNTAIN HOME
 TO: AGRICULTURAL EXCLUSIVE
 LAND USE & ZONE



SCALE
 1" = 2000'



NOTE: Applicant's Parcel Numbers are indicated by a circle. They may not be used as a basis for legal property.