

MARIPOSA COUNTY ORDINANCE NO. 792

**AN ORDINANCE ESTABLISHING  
ASSESSMENT FEES FOR ZONES OF BENEFITS  
(Not to be codified)**

WHEREAS, Zones of Benefit created prior to January 1, 1992 are to be assessed fees during the calendar year of 1992, for the services included in the "zone" being created.

WHEREAS, the fees were established through public hearing process;

NOW THEREFORE, THE BOARD OF SUPERVISORS of Mariposa County, a political subdivision of the State of California, does ordain as follows:

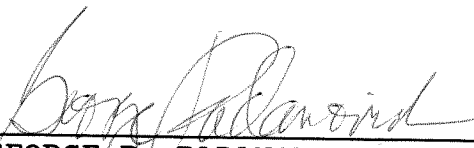
SECTION I: In regards to the **LITTLE BEAR ROAD ZONE OF BENEFIT**; during the public hearing on January 15, 1991, the total fees established were: (1) the up-front costs to initiate this zone, an amount of five thousand seven hundred thirty four dollars and eighty cents (\$5734.80); and (2) for the first year, an amount of two thousand six hundred twenty seven dollars and forty cents (\$2627.40); and were adopted by Board Resolution 91-24. Said fees shall be apportioned equally among the eight (8) lots included in this zone; and during the first year, shall be assessed a yearly sum of three hundred twenty eight dollars and forty three cents (\$328.43) each. Any subsequent division of any of the lots within this zone shall cause the yearly assessment to be apportioned equally to all of the lots within the boundaries of this zone. Said fees shall be reviewed annually, and adjusted by the Board of Supervisors, by Resolution. A legal description and map of the boundaries are attached hereto and marked Exhibits "A" and Exhibit "B", and by reference incorporated herein.

SECTION II: This ordinance shall become effective thirty days from the date of final passage pursuant to California Government Code Section 25123.

Ord. 792  
Page two

PASSED AND ADOPTED this 22nd day of January, 1991  
by the Mariposa County Board of Supervisors by the following  
vote:

AYES: BAGGETT, PUNTE, ERICKSON, RADANOVICH, TABER  
NOES: NONE  
ABSENT: NONE  
ABSTAINED: NONE

  
\_\_\_\_\_  
GEORGE P. RADANOVICH, Chairman  
Mariposa County Board of Supervisors

ATTEST:

  
\_\_\_\_\_  
MARGIE WILLIAMS  
Clerk of the Board

APPROVED AS TO FORM AND  
LEGAL SUFFICIENCY:

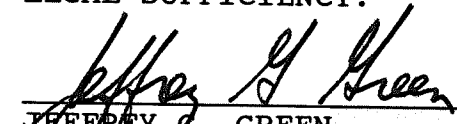
  
\_\_\_\_\_  
JEFFREY G. GREEN  
County Counsel

EXHIBIT "A"

PARCEL DESCRIPTION

Beginning at the corner of sections 1 and 2, Township 6 south, Range 18 east, Mt. Diablo Base and Meridian, thence S89°34'27"E 1668.69 feet, thence along the centerline of Gann Corral Road the following 6 courses and distances:  
Southeasterly along a 200.00 foot radius curve to the right with a central angle of 27°55'30" an arc length of 97.48 feet, S2°14'41"W 312.89 feet, along a 250.00 foot radius curve to the left with a central angle of 36°41'33" an arc length of 160.10 feet, S34°26'52"E 179.69 feet, along a 450.00 foot radius curve to the right with a central angle of 21°12'46" an arc length of 166.61 feet, S13°14'06"E 123.22 feet, thence leaving said centerline S83°31'49"W 30.21 feet, thence N85°55'18"W 589.84 feet, thence South 375.00 feet, thence S89°42'52"E 613.00 feet, thence continuing along said centerline the following 11 courses:  
Southwesterly along a 560.00 foot radius curve to the right with a central angle of 14°22'27" an arc length of 140.49 feet, S21°18'56"W 108.19 feet, along a 560.00 foot radius curve to the right with a central angle of 9°29'06" an arc length of 92.70 feet, S30°48'02"W 269.66 feet, along a 75.00 foot radius curve to the left with a central angle of 100°19'28" an arc length of 131.32 feet, S69°31'26"E 187.41 feet, along a 315.00 foot radius curve to the right with a central angle of 32°25'49" an arc length of 178.30 feet, S37°05'37"E 79.91 feet, along a 210.00 foot radius curve to the right with a central angle of 48°34'33" an arc length of 178.04 feet, S11°28'56"W 196.11 feet, along a 520.00 foot radius curve to the left with a central angle of 7°50'50" an arc length of 71.22 feet, thence leaving said centerline, S89°58'52"W 2013.03 feet, thence N89°38'56"W 2640.92 feet, thence N00°41'56"W 2650.95 feet, thence S89°46'10"E 2634.70 feet to the point of beginning.



DOUGLAS BREADAHL  
ENGINEERING FIELD SERVICES  
P.O. BOX 424  
NORTH FORK, CALIFORNIA 93643

SCALE: 1" = 300'



N  
↑

# LITTLE BEAR ROCK ZONE of BENEFIT

## EXHIBIT "B"

GANN CORRAL RD

### BASIS OF BEARINGS

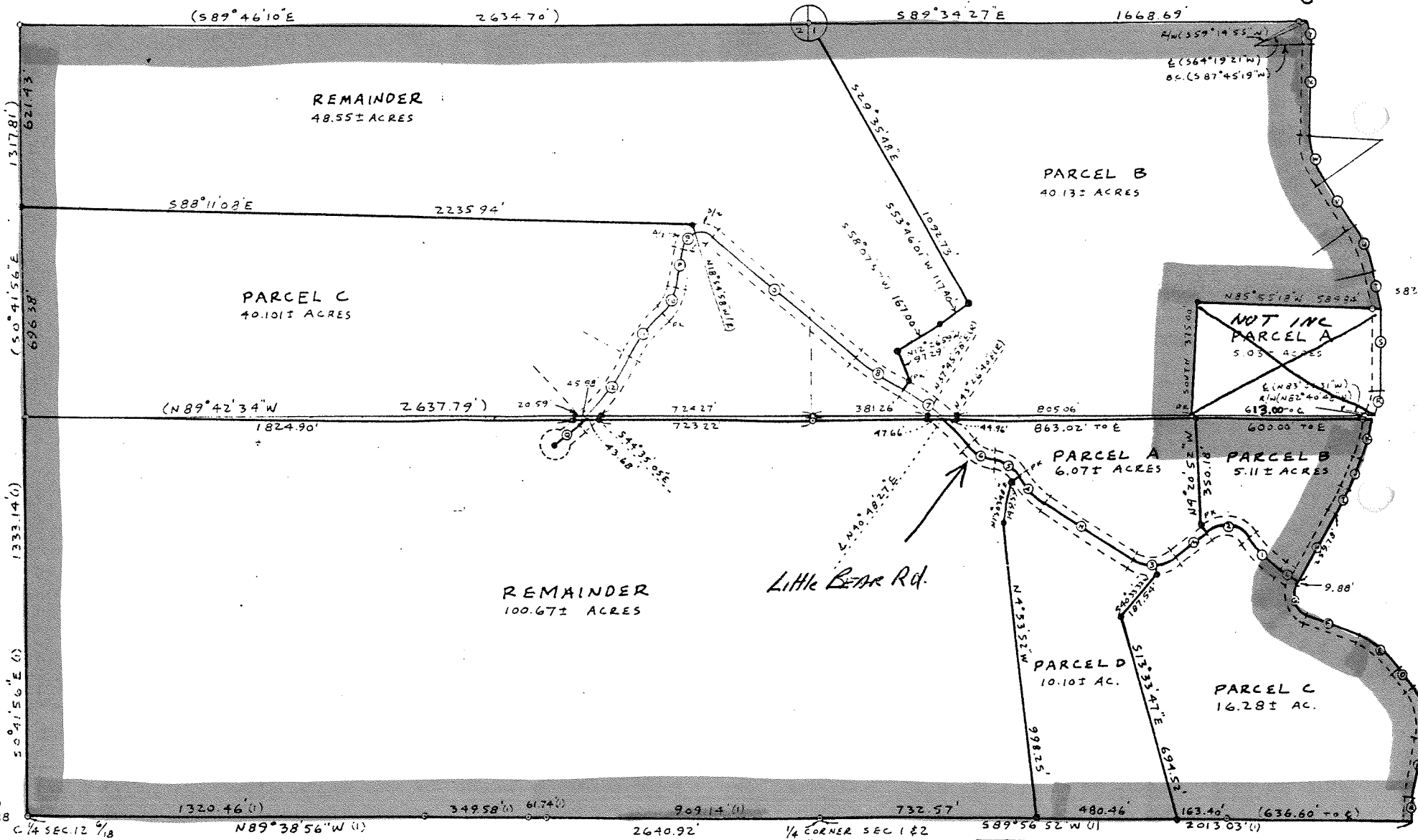
IS TAKEN TO BE N89°42'52"W BETWEEN FOUND MONUMENTS LABELLED "N 1/4 CORNER SECTIONS 1 & 2" AND THE RIGHT-OF-WAY MONUMENT AT THE SE CORNER OF PARCEL C, ALL PER REFERENCE (1).

### CENTERLINE ROAD DATA

A	Δ 27°50'50"	R = 520.00	L = 71.22	T = 36.67
B	S 1°42'56" W	R = 196.11	L = 17.834	T = 94.77
C	Δ 148°44'33"	R = 210.00	L = 17.834	T = 94.77
D	S 37°05'37" E	R = 19.91	L = 17.834	T = 94.77
E	Δ 32°25'44"	R = 315.00	L = 17.830	T = 91.61
F	S 62°11'38" E	R = 187.41	L = 17.830	T = 91.61
G	Δ 2°00'18" E	R = 237.50	L = 17.830	T = 91.61
H	S 30°48'02" W	R = 269.66	L = 17.830	T = 91.61
I	Δ 2°47'23"	R = 260.00	L = 17.830	T = 91.61
J	S 31°07'52" W	R = 540.00	L = 17.830	T = 91.61
K	Δ 31°42'22" W	R = 540.00	L = 17.830	T = 91.61
L	N 55°54'33" W	R = 19.52	L = 140.49	T = 70.62
M	Δ 20°56'22"	R = 450.00	L = 157.43	T = 74.81
N	Δ 21°35'50"	R = 91.09	L = 145.63	T = 93.67
O	S 82°34'29" W	R = 124.04	L = 153.00	T = 87.74
P	Δ 70°07'45"	R = 125.00	L = 153.00	T = 87.74
Q	N 47°17'47" W	R = 32.25	L = 137.46	T = 47.36
R	Δ 2°07'29"	R = 300.00	L = 103.205	T = 56.59
S	Δ 2°52'50"	R = 187.84	L = 104.08	T = 55.12
T	Δ 22°56'57"	R = 712.82	L = 285.51	T = 144.70
U	Δ 12°48'13"	R = 862.86	L = 123.83	T = 100.355
V	Δ 118°15'06" (Total)	R = 60.00	L = 24.33	T = 48.78
W	Δ 36°29'35"	R = 150.00	L = 176.91	T = 89.83
X	S 2°14'41" W	R = 412.76	L = 269.64	T = 137.26
Y	Δ 327°55'30"	R = 584.07	L = 269.64	T = 137.26

### CENTERLINE ROAD DATA

0	V 40°47'25" W	R = 621.75	L = 64.70	T = 32.51
1	S 11°57'23" W	R = 157.39	L = 64.70	T = 32.51
2	S 40°51'43" W	R = 117.36	L = 64.70	T = 32.51
3	Δ 6°30'45"	R = 562.00	L = 64.70	T = 32.51
4	S 00°07'44" W	R = 274.72	L = 64.70	T = 32.51
5	S 3°14'06" E	R = 125.22	L = 64.70	T = 32.51
6	Δ 21°17'46"	R = 450.00	L = 166.01	T = 84.27
7	S 14°21'57" E	R = 179.69	L = 166.01	T = 84.27
8	Δ 36°29'35"	R = 2250.00	L = 160.10	T = 82.70
9	S 2°14'41" W	R = 312.89	L = 97.44	T = 49.75
10	Δ 327°55'30"	R = 520.00	L = 97.44	T = 49.75
11	Δ 22°56'57"	R = 712.82	L = 285.51	T = 144.70
12	Δ 12°48'13"	R = 862.86	L = 123.83	T = 100.355
13	Δ 118°15'06" (Total)	R = 60.00	L = 123.83	T = 100.355
14	Δ 36°29'35"	R = 150.00	L = 24.33	T = 48.78
15	Δ 2°14'41" W	R = 412.76	L = 176.91	T = 89.83
16	Δ 327°55'30"	R = 584.07	L = 269.64	T = 137.26



3/4 1.010  
RCE 6888

1320.46 (1) 349.58 (1) 61.74 (1) 909.14 (1) 732.57 480.46 163.40 (636.60 ± 0.6)

1/4 CORNER SEC 1 & 2  
5/8" REBAR LS. 4079